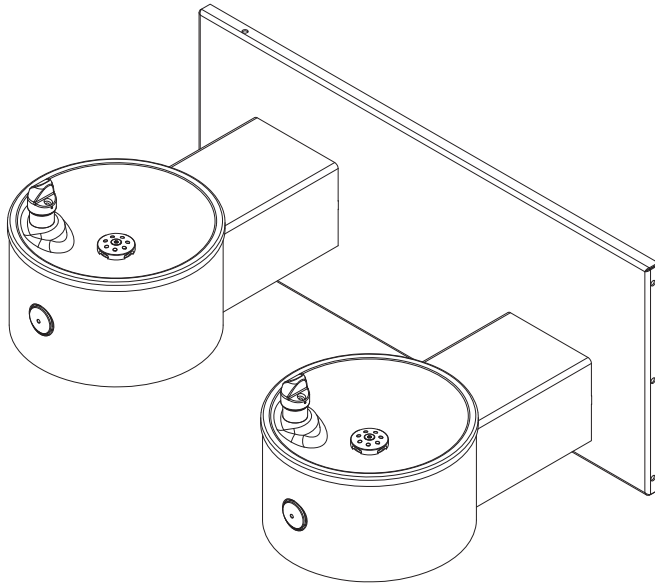


# Installation & Operation Manual

## WODF-2WM Series

### Outdoor Drinking Fountain Wall Mounted unit



**WODF-2WM**

#### Table of Contents

Pre-Installation Information.....	3
Physical / Rough-in Dimensions.....	4
Required Installation Supplies.....	5
Parts List and Exploded-view Drawings.....	6
Hardware Identification .....	7
Installation Instructions .....	
Step 1: Fixture Installation .....	8
Step 2A: Adjusting Drinking Spout Flow .....	9
Care and Maintenance .....	10
Troubleshooting .....	
Fixture Plumbing.....	11
Drawings.....	
Pushbutton Details .....	12
Warranty.....	13



#### ***Willoughby Stainless Fountains***

5105 West 78th Street

Indianapolis, IN 46268

Toll Free: (800) 428-4065

Local: (317) 875-0830

Fax: (317) 875-0837

[www.willoughbystainlessfountains.com](http://www.willoughbystainlessfountains.com)

MADE IN THE U.S.A.



***(Page intentionally left blank)***

## Pre-Installation Information

# Installation notice!

Check Rough-In location **PRIOR** to installation

Flush lines thoroughly **PRIOR** to hook-up

When installing the **Willoughby Stainless Fountains' WODF-2WM Series** drinking fountain system:

Before Step 1 of the installation instructions, ensure that rough-ins are in the correct location.

The valve assembly, including the spray head, **MUST NOT BE** connected until *after* all lines have been flushed to remove the small particles of debris that are inherent with new construction projects and all chemicals that are used in flushing are purged from the system.

Chemicals used in flushing plumbing systems can attack the internal components of the valve and spray head and severely damage them, so any flushing of the system must be followed by a full flushing with pure water to clear any harsh chemicals remaining in the system. Debris in the system if allowed to enter the valve assembly and spray head can cause poor performance or outright failure.

Again **DO NOT** attempt to connect the valve assembly and spray head until *after* all flushing is complete and pure water is the only media that will be passing through the system. Damage to the valve assembly or spray head caused by harsh chemicals or debris will not be covered by the manufacturer's warranty.

Any fittings provided by the installer should be made of plastic to electrically isolate the unit from the building or connected plumbing system.

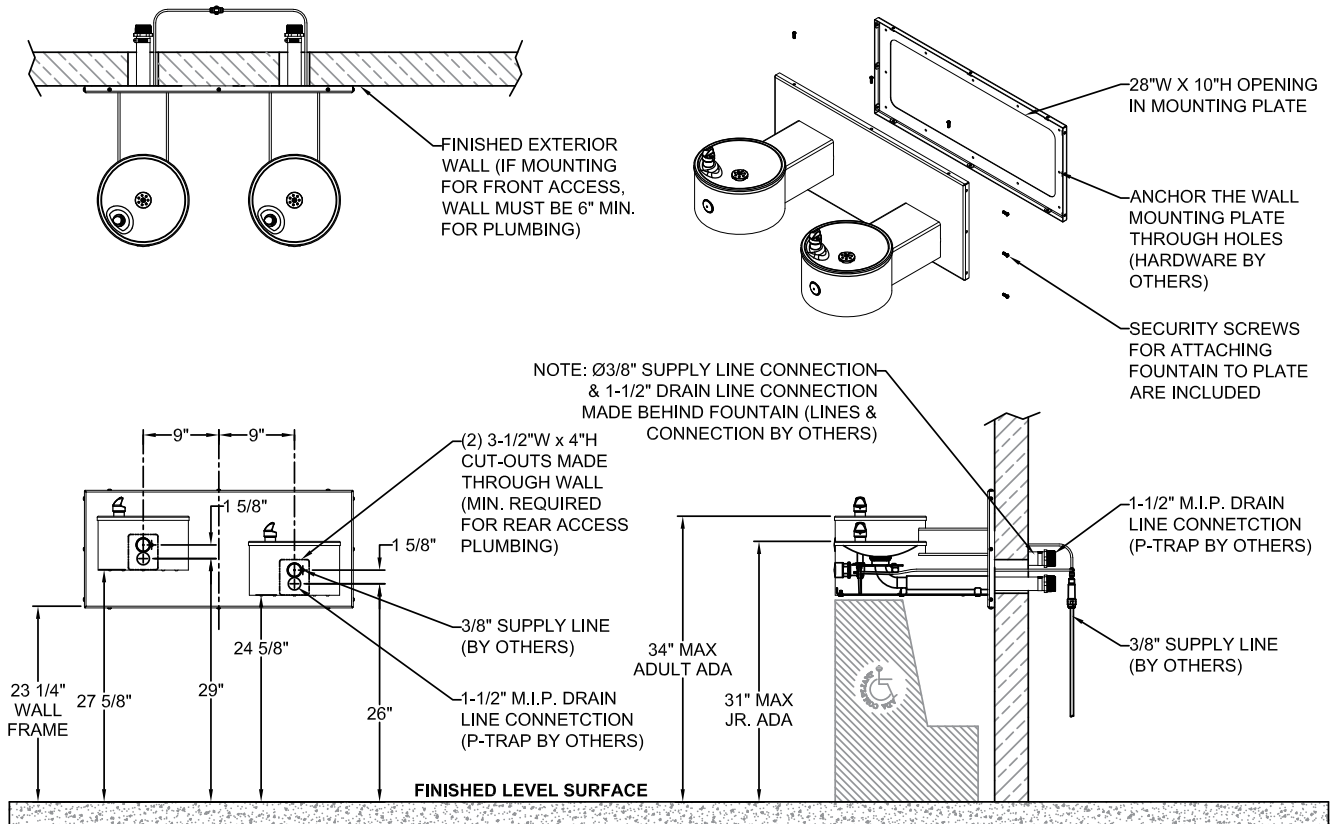
The grounding of electric equipment such as telephones, computers, etc, to water lines is a common procedure. This grounding can cause electrical feedback into a water fountain or similar fixture, causing electrolysis, which results in a metallic taste or an increase in the metal content of the water. This can easily be avoided by using the proper materials as indicated.

# Installation notice!

Check Rough-In location **PRIOR** to installation

Flush lines thoroughly **PRIOR** to hook-up

# Physical / Rough-in Dimensions- WODF-2WM

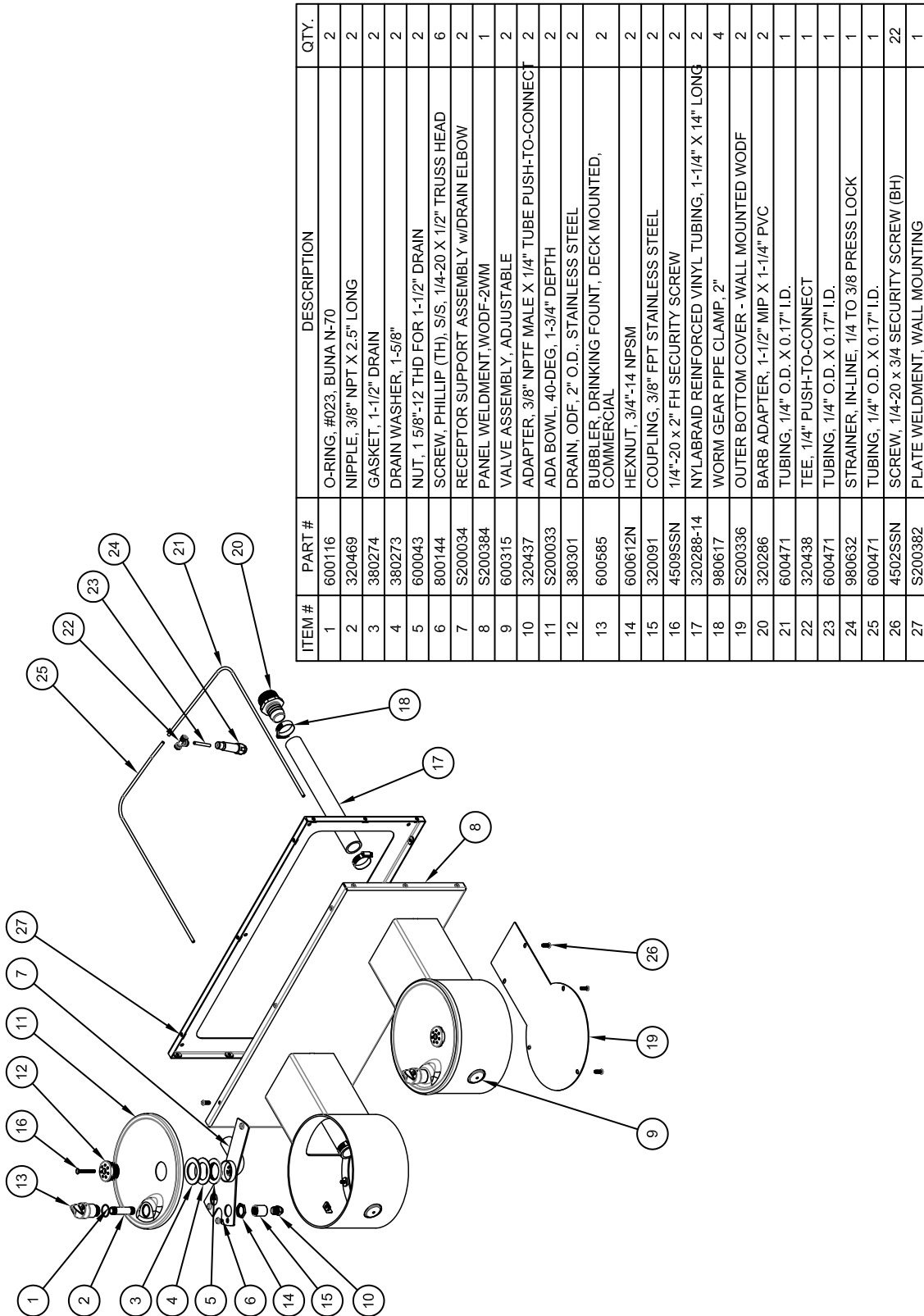


## **Required Installation Supplies**

- Proper mounting hardware
- Proper plastic fittings as indicated
- Hardware for waste outlet connections
- Shims (for installation if necessary)
- Supply piping
- Silicone caulk
- Plumbers putty

**□ WARNING: Willoughby Stainless Fountains does not assume any responsibility for personal injury or damage to equipment due to an improperly installed WODF-2WM Series drinking fountain system:**

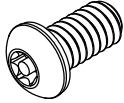
# Parts List and Exploded-view Drawing- WODF-2WM



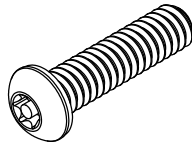
ITEM #	PART #	DESCRIPTION	QTY.
1	600116	O-RING, #023, Buna N-70	2
2	320469	NIPPLE, 3/8" NPT X 2.5" LONG	2
3	380274	GASKET, 1-1/2" DRAIN	2
4	380273	DRAIN WASHER, 1-5/8"	2
5	600043	NUT, 1 5/8"-12 THD FOR 1-1/2" DRAIN	2
6	800144	SCREW, PHILLIP (TH), SIS, 1/4-20 X 1/2" TRUSS HEAD	6
7	S200034	RECEPTOR SUPPORT ASSEMBLY w/ DRAIN ELBOW	2
8	S200384	PANEL WELDMENT, WODF-2WM	1
9	600315	VALVE ASSEMBLY, ADJUSTABLE	2
10	320437	ADAPTER, 3/8" NPTF MALE X 1/4" TUBE PUSH-TO-CONNECT	2
11	S200033	ADA BOWL, 40-DEG, 1-3/4" DEPTH	2
12	380301	DRAIN, ODF, 2" O.D., STAINLESS STEEL	2
13	600585	BUBBLER, DRINKING FOUNT, DECK MOUNTED, COMMERCIAL	2
14	600612N	HEX NUT, 3/4"-14 NPSM	2
15	320091	COUPLING, 3/8" FPT STAINLESS STEEL	2
16	4509SSN	1/4"-20 x 2" FH SECURITY SCREW	2
17	320288-14	NYLABRAID REINFORCED VINYL TUBING, 1-1/4" X 14" LONG	2
18	980617	WORM GEAR PIPE CLAMP, 2"	4
19	S200336	OUTER BOTTOM COVER - WALL MOUNTED WODF	2
20	320286	BARB ADAPTER, 1-1/2" MIP X 1-1/4" PVC	2
21	600471	TUBING, 1/4" O.D. X 0.17" I.D.	1
22	320438	TEE, 1/4" PUSH-TO-CONNECT	1
23	600471	TUBING, 1/4" O.D. X 0.17" I.D.	1
24	980632	STRAINER, IN-LINE, 1/4 TO 3/8 PRESS LOCK	1
25	600471	TUBING, 1/4" O.D. X 0.17" I.D.	1
26	4502SSN	SCREW, 1/4-20 x 3/4 SECURITY SCREW (BH)	22
27	S200382	PLATE WELDMENT, WALL MOUNTING	1

# Hardware Identification

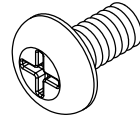
## WODF Series / CWBF Series Hardware



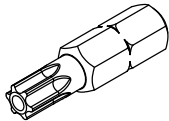
1/4-20 x 1/2"  
SECURITY SCREW  
4500NSS



1/4-20 x 1"  
SECURITY SCREW  
800114



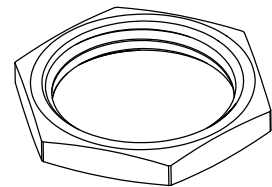
1/4"-20 x 1/2"  
PHILLIPS SCREW  
800144



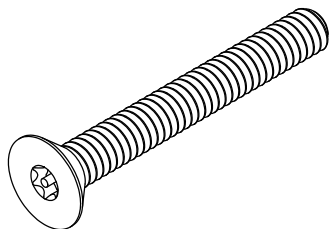
T27  
1/4" PINNED TORX BIT  
800115



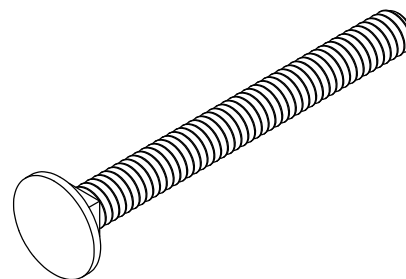
1/4"-20 HEX NUT  
600613N



3/4" NPT  
BRASS LOCKNUT  
600612N



1/4"-20 x 2"  
FLAT HEAD SECURITY SCREW  
4509SSN



1/4"-20 x 2-1/2"  
CARRIAGE BOLT  
600635N

# **Installation Instructions**

## **Step 1: Fixture Installation**

**Note: The WODF outdoor drinking fountain is to be mounted on a flat, suitably level surface (wall, concrete or otherwise) with an adequate support structure.**

**Note: Refer to the Physical / Rough-In Dimensions for locating fixture mounting points and plumbing connections.**

- 1.) Install service shut-off valve in water supply line (valve not furnished).
- 2.) Locate and complete the rough-in mounting holes and plumbing access hole as specified.
- 3.) Install the drinking fountain wall mounting plate using hardware supplied by others.
- 4.) Once the wall mounting plate has been attached, mount the fixture by placing it on the mounting plate. Secure the fixture to the plate with the security screws provided.
- 5.) Make sure that the positioned fixture is level, both front to back and side to side, to ensure proper draining. Adjust as necessary, then fully tighten the nuts to secure the fixture.
- 6.) As noted previously, flush the water supply line with clean drinking water before making final connections to the drinking fountain.
- 7.) Connect water supply line to inline strainer inside the drinking fountain or bottle filler using 3/8" plastic tubing (extra tubing not furnished). Push tube straight into fitting on filter about 3/4" until it reaches a positive stop. Water supply connection must comply with local codes.
- 8.) Connect the drain line to drainage system. Drain is to be 1-1/2" MIP minimum to a porous gravel fill or main sewer line located below frost line. Installer to provide waste trap downstream of drain connection. Drain and waste trap must comply with local codes.
- 9.) Turn on water supply and check both the water supply lines and drain lines for leaks.\*

\*For a Push Button flow adjustment, go to **Step 2**

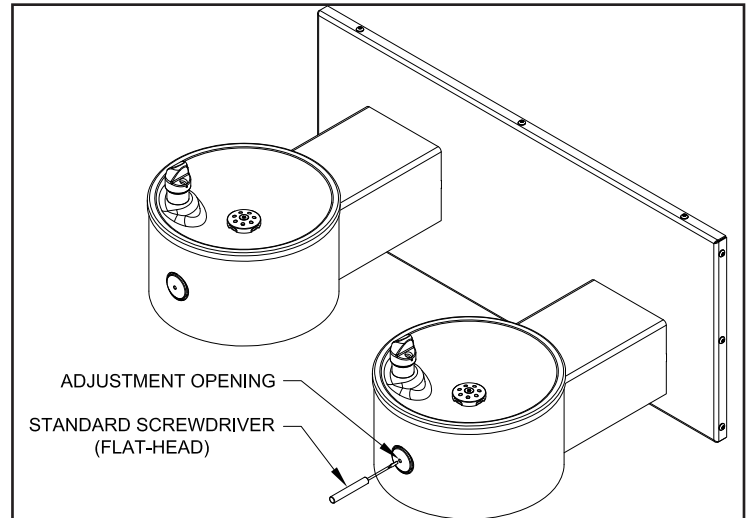


## Installation Instructions (cont.)

### Step 2: Adjusting Drinking Fountain Flow (Push Button)

- 1.) Insert a standard flat-head screwdriver into adjustment opening on face of pushbutton, as shown.
- 2.) Rotate screwdriver to adjust until desired flow is achieved:

Rotate clockwise to increase flow.  
Rotate counterclockwise to decrease flow.



(WODF-2WM shown)

# **Care and Maintenance**

## **Unit Care**

Willoughby Stainless Fountains' WODF Outdoor Drinking Fountains are not freeze resistant. The unit should be disconnected or shut off from the water supply and drained during the colder months. For more information, refer to the rough-in detail.

In order to ensure adequate flow and cleanliness of water, the inline strainer in the supply line should be cleaned or replaced regularly. New inline strainers can be ordered using Willoughby Part No. 980632.

---

## **Stainless Steel Care**

Stainless Steels are basically alloys of iron and chromium and are corrosion resistant. Stainless steel has a bright surface that is easy to clean and is free from oxides. Therefore, cleaning of stainless steel is relatively simple and easy if done on a regular basis.

Frequency of cleaning should depend on the rate at which the fixture becomes dirty. Remember that fresh (soft) deposits of all kinds are relatively easy to remove, while removing older (hard) deposits are much more difficult. Establish a cleaning SCHEDULE.

Routine cleaning should involve ordinary soap or detergent and water, applied with a sponge, brush or cloth. Baking soda, borax or any of several non-abrasive commercial cleansing agents can help hasten the cleaning action. After scrubbing, rinse **THOROUGHLY** and wipe dry.

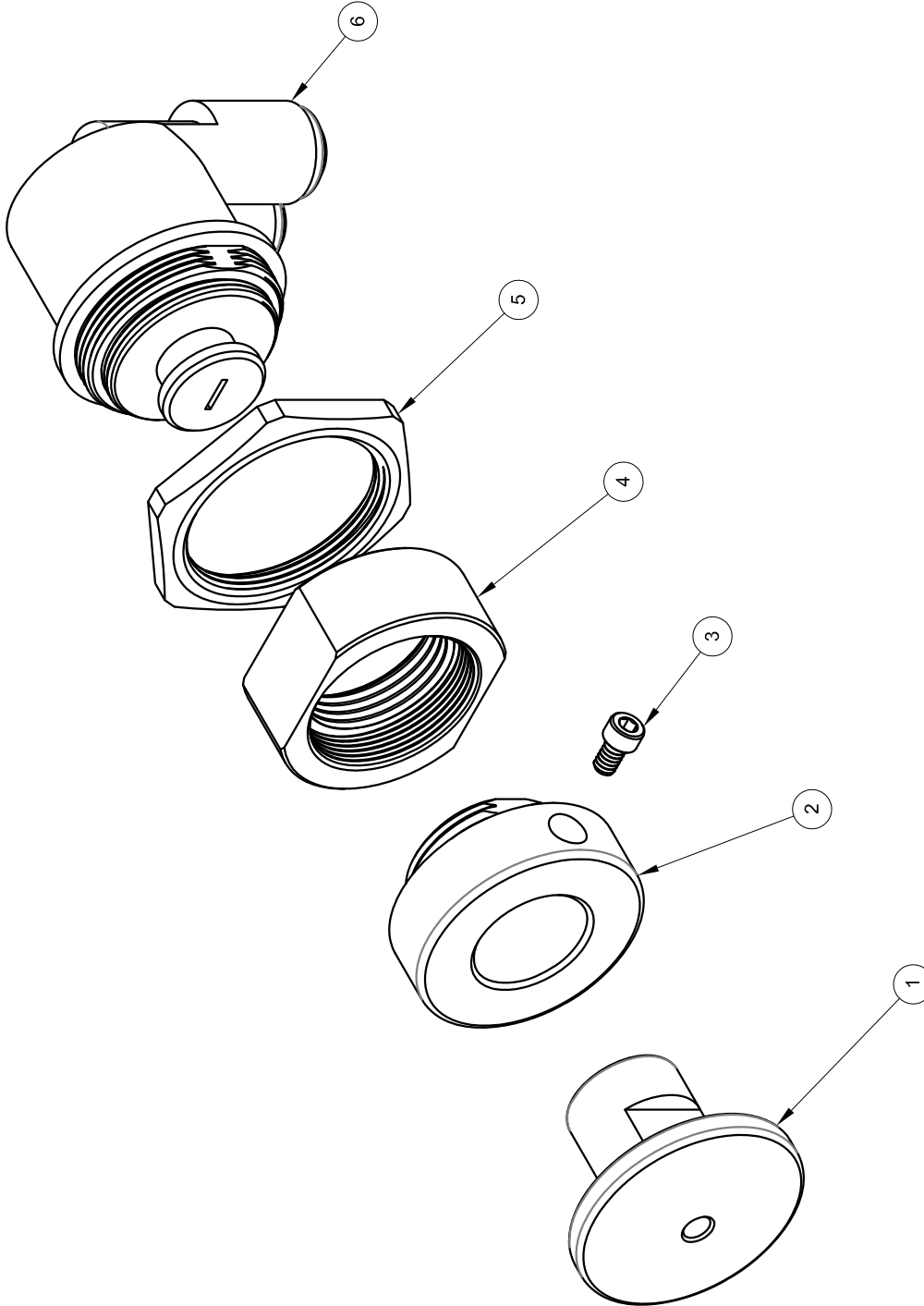
**DO NOT** use common steel wool, scouring pads, scrapers, wire brushes, files or other steel tools to clean stainless steel. Such items will scratch the surface or leave small particles of iron imbedded in the surface, which will eventually rust and stain the surface - even appearing as if the stainless itself was rusting.

Certain chemical compounds, if used on stainless steel, can give the appearance of rust and if allowed to stand for long periods of time, can pit the surface of even stainless. Products containing hydrochloric acid, muriatic acid or potassium hydrochloride can ruin the surface.

## **Troubleshooting- Fixture Plumbing**

- I. Insufficient Flow
  - A. Ensure the service shut-off valve is fully open (provided by installer).
  - B. Ensure water supply is within the normal operating range of 40-60 psi.
    - 1. If pressure is too low, flow can be drastically reduced.
    - 2. If pressure is too high, the strainer and/or valve may have been damaged.
    - 3. The unit is rated for a maximum range of 30-105 psi.
  - C. Inspect the unit's valve for damage, and replace if necessary.
  - D. Inspect the inline strainer for damage and/or clogging, and clean or replace as necessary.
  - E. Check all fittings and tubing for damage and leaks. Replace components as necessary.
  
- II. Unit has problems draining
  - A. Remove and clean the drain screen.
  - B. Remove any debris from the drain.
  - C. Remove any debris from the PVC pipe and fittings.
  - D. Check and clear the waste trap (provided by installer).

**DRAWING: Pushbutton Detail**



ITEM #	PART #	DESCRIPTION	QTY.
1	380110	PUSH PIN, ADJUSTABLE PUSHBUTTON VALVE	1
2	380111	SLEEVE, ADJUSTABLE PUSHBUTTON VALVE	1
3	800157	6-32 x 1/4" SH CAP SCREW	1
4	380062	SLEEVE, ADAPTER TO ELKAY PLASTIC SELF-CLOSING VALVE	1
5	600286	NUT, CARTRIDGE MOUNTING	1
6	600285	SELF-CLOSING CARTRIDGE, 1.0 GPM	1

# **Warranty**

Willoughby Industries, Inc. warrants to commercial and institutional purchasers only that each unit will be free from defects in workmanship and materials under normal use and service upon the following terms and conditions for a period of one (1) year from date of shipment.

This warranty does not cover installation or any other labor charges and does not apply to any components damaged by accident, abuse, improper installation or improper maintenance. This warranty does not cover any installation that did not comply with national, state and local building, plumbing or electrical codes. The warranty is limited to replacing or repairing at manufacturer's option, transportation charges prepaid by the purchaser, any component or part which upon our inspection shall be deemed as defective within the limitations of this warranty. The replacement or repair of defective units as stated in this warranty shall constitute the sole remedy of the purchaser and the sole liability of Willoughby Industries, Inc. Willoughby Industries, Inc. shall not otherwise be liable under any indirect damages caused by defects in the repair or replacement thereof.

This warranty only extends to commercial and industrial purchasers and does not extend to any others, including consumer customers of commercial institutional purchasers. This warranty is in lieu of all other warranties, expressed or implied, including implied warranty of merchantability or fitness for a particular purpose or otherwise.